

COLOUR TABLE

KEY	COLOUR	SPECIFICATIONS	APPROXIMATE MATCH					
			GUNZE MR COLOR	HUMBROL	MODELMASTER	REVELL	TAMIYA	XTRACOLOR
A	LIGHT GREY	F5595B # 26495	H338	147	1732	32371	XF-14	-
B	BLACK	F5595B # 37038	H12 / H343	33	1749	32302	XF-1	X12
C	LIGHT GREEN	F5595B # 34102	H303	117	1713	32145	-	X116
D	STEEL	-	H18	87	1780	32191	X-56	-
E	ALUMINIUM	-	H8	56	1781	32199	XF-16	X252
F	MEDIUM BLUE	F5595B # 35177	-	96	-	-	XF-18	-
G	GLOSS WHITE	F5595B # 17925	H1	22	2712	32104	X-02	X145
H	TAN	F5595B # 30219	H310	118	1742	32382	XF-52	X102
I	FOREST GREEN	F5595B # 34079	H73	116	1710	32165	XF-13	X110
J	GRAY	F5595B # 36622	H311	28	1733	-	-	-



FAIRCHILD AU-23A PEACEMAKER

K 072087

1/72 Scale Model Construction Kit

HISTORY

The Pilatus PC-6 Turbo Porter is a Swiss produced utility aircraft that first flew in 1961. Its superb short take off and landing (STOL) performance lead to it being adopted by many armed forces around the world, and it is a highly successful civilian design.

Fairchild Hillier acquired a production licence from Pilatus for the Turbo Porter in the mid '60s to supply aircraft to the local market. In the late '60s it developed a COIN variant, powered by a 665-shp Garret turboprop, with provision for one under-fuselage and four underwing hardpoints. A total of 36 were built for the USAF, which made use of them in Vietnam.

In June & July 1971, the AU-23A was evaluated in combat conditions in Vietnam under the program PAVE COIN. This program also trialled the Helio AU-24A and North American Mustang derived Piper PA-48 Enforcer

Despite the airframe reliability and STOL performance, the AU-23A was not found to be suitable for combat. The slow speed and lack of armour protection for the crew were the main problems and the evaluation found that the Peacemaker was vulnerable to even the lightest anti-aircraft fire.

28 were eventually supplied to the Thai Air Force, and 5 to the Thai Police. Although a number have been lost, the survivors still remain in use at present.

NOTE

This kit was difficult to mould reliably. As a compromise it was necessary to mould the fuselage with the windows filled in. Despite this a good representation of the AU-23 can be built with a little patience.

WORKING WITH MULTIMEDIA PARTS

High Planes kits may include parts made from materials other than the polystyrene plastic used traditionally in scale model kits.

P Polystyrene Plastic

Remove with cutters or knife blade.

Attach with solvent adhesives or cyanoacrylate.

V Vacu-formed PETG Plastic

Remove with fine scissors or a new knife blade.

Attach with non-solvent adhesives - PVA glue or watch crystal cement. Cyanoacrylate can be used if the canopy coated with vinyl floor polish [e.g. Future] first to stop fogging.

R Polyurethane Resin

Remove with a scribe, knife blade or saw.

Attach with non-solvent adhesives - PVA glue, cyanoacrylate or epoxy.

WARNING: Polyurethane resin dust can be hazardous. A face mask should be worn and the residue carefully collected and disposed of following your local regulations.

C Cast Metal

Remove with clippers, saw or knife.

Attach with non-solvent adhesives - PVA glue, cyanoacrylate or epoxy.

E Etched Brass

Remove with clippers, saw or knife. For easier cutting pieces can be placed on low-tack paper [e.g. Post-It notes].

Attach with non-solvent adhesives - PVA glue, cyanoacrylate or epoxy.

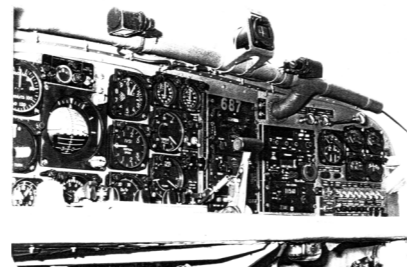
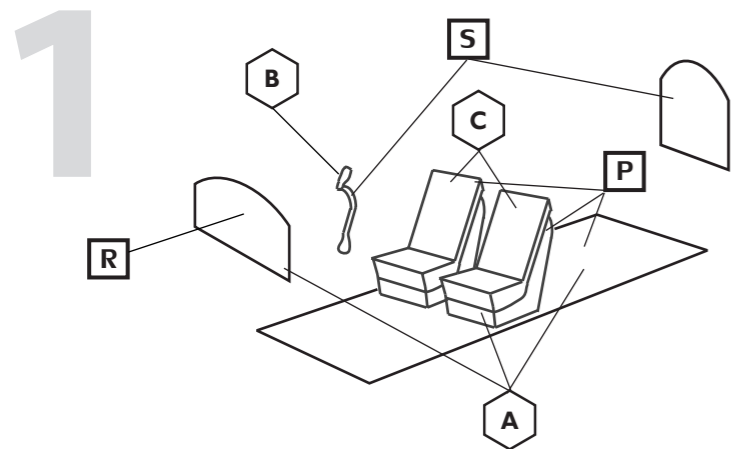


FAIRCHILD AU-23A PEACEMAKER

K 072087
1/72 Scale Model Construction Kit

CONSTRUCTION

Construction may require parts to be scratch built or sourced from a spares box. These are marked **S** and notes are given.



Construction Notes

Scratch build a control column. It has a distinctive forward curve, and is fitted on the port side.

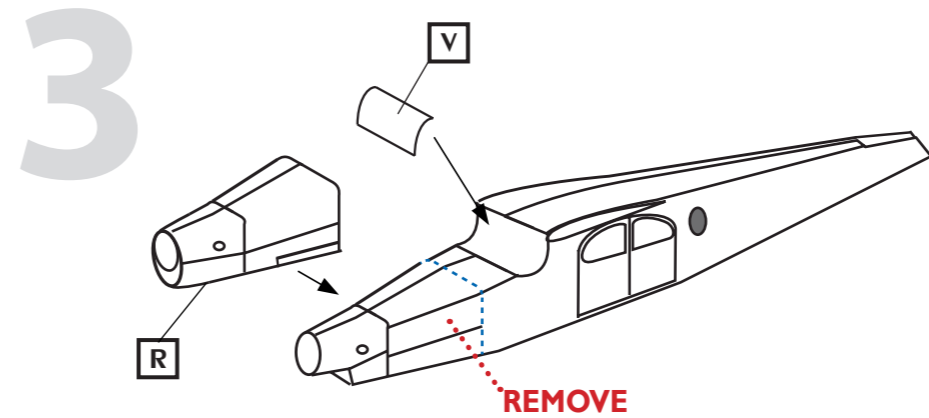
Scratch build the rear cabin bulkhead [behind the two circular windows], add seat belts [black] or additional jump seats in the cargo bay.

Colour Notes

Cockpit walls, instrument panel and seat frames are a light grey, probably FS # 26495 Light Grey.

The cockpit walls have padding in a light ivory color around the door frames while the floor was originally probably FS # FS 34087 Olive Drab.

The seats are fitted with olive drab fabric covered cushions, close to FS # 34102 Light Green

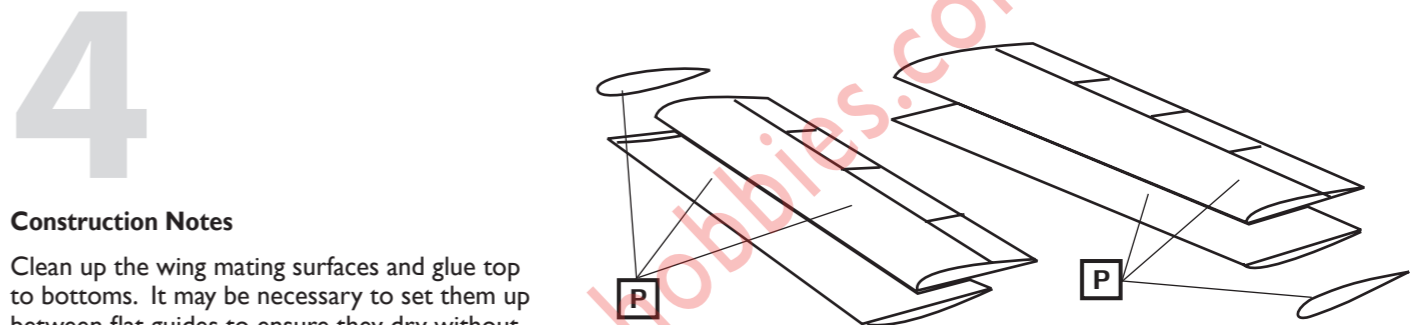


Construction Notes

Once the fuselage sides are joined, the nose needs to be removed at the point just forward of the cockpit where the engine bay begins.

Now attach new resin nose.

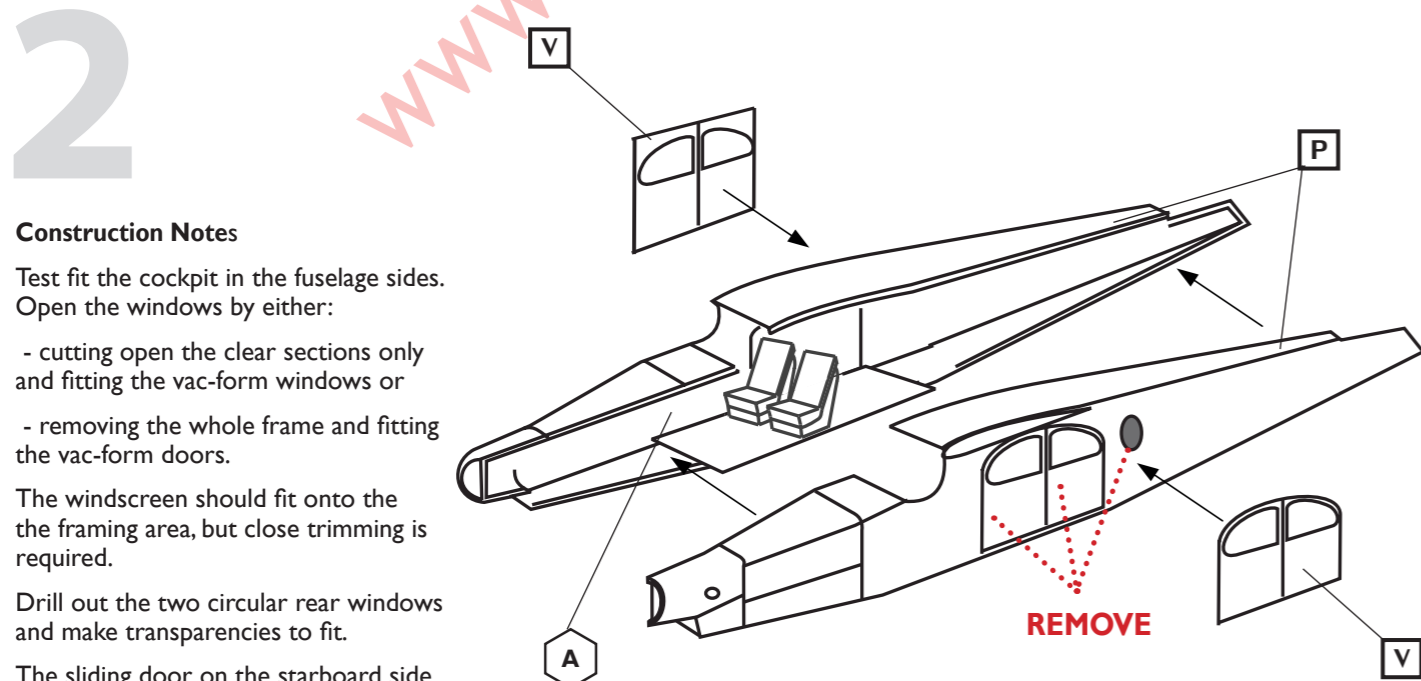
Once the nose is dry, trim and fit the windshield.



Construction Notes

Clean up the wing mating surfaces and glue top to bottoms. It may be necessary to set them up between flat guides to ensure they dry without a bend, or alternatively, if they have a slight bend already, realign them under hot water before gluing.

Fit the flat end plates and smooth them in to the wing contours. Alternative wing tips are included for later versions but these are not applicable with these options.



Construction Notes

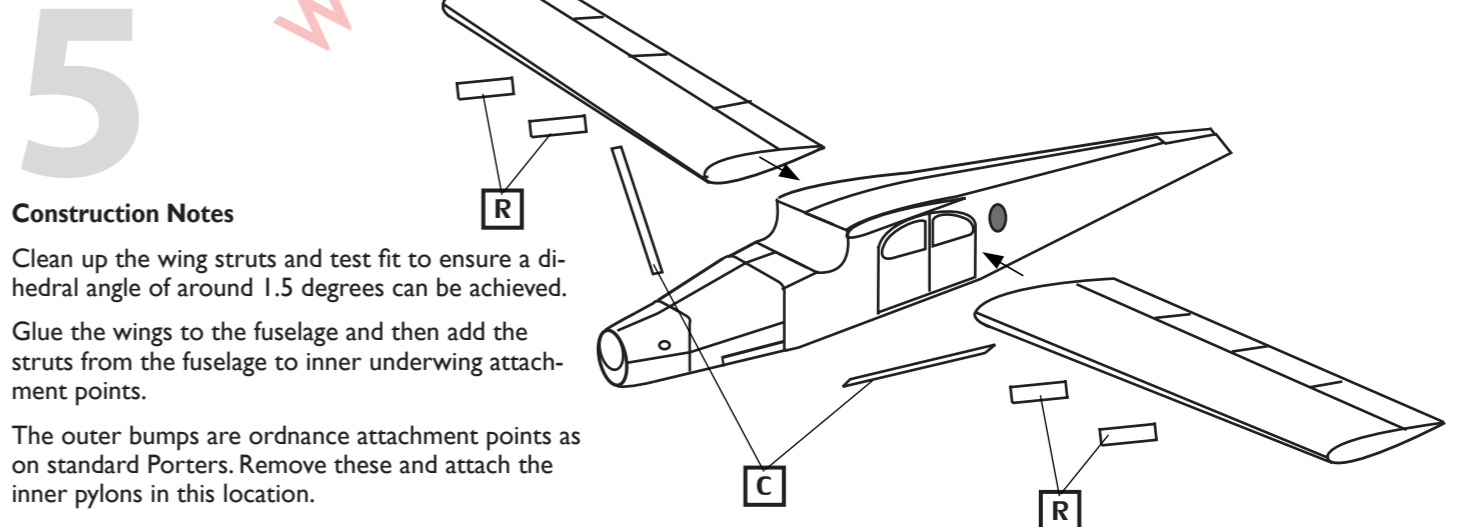
Test fit the cockpit in the fuselage sides. Open the windows by either:

- cutting open the clear sections only and fitting the vac-form windows or
- removing the whole frame and fitting the vac-form doors.

The windscreen should fit onto the the framing area, but close trimming is required.

Drill out the two circular rear windows and make transparencies to fit.

The sliding door on the starboard side should fit between the two horizontal rails, and stands proud of the fuselage.



Construction Notes

Clean up the wing struts and test fit to ensure a dihedral angle of around 1.5 degrees can be achieved.

Glue the wings to the fuselage and then add the struts from the fuselage to inner underwing attachment points.

The outer bumps are ordnance attachment points as on standard Porters. Remove these and attach the inner pylons in this location.

Refer to the following diagram for the location.

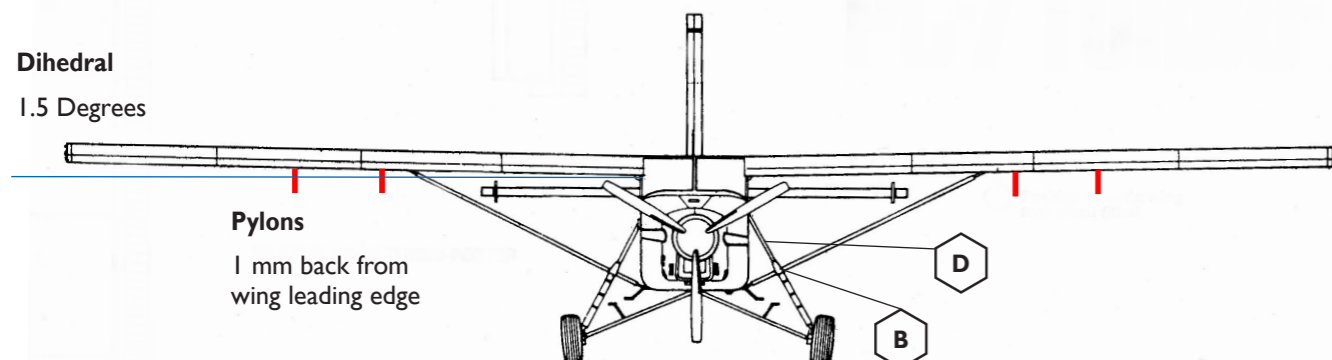


FAIRCHILD AU-23A PEACEMAKER

K 072087

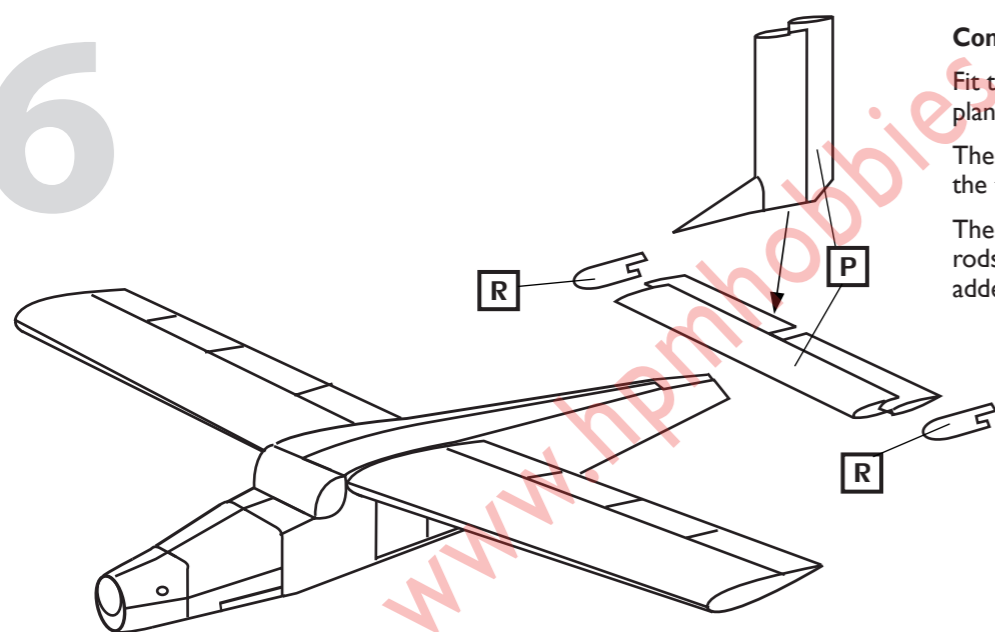
1/72 Scale Model Construction Kit

Dihedral
1.5 Degrees



Pylons
1 mm back from
wing leading edge

6



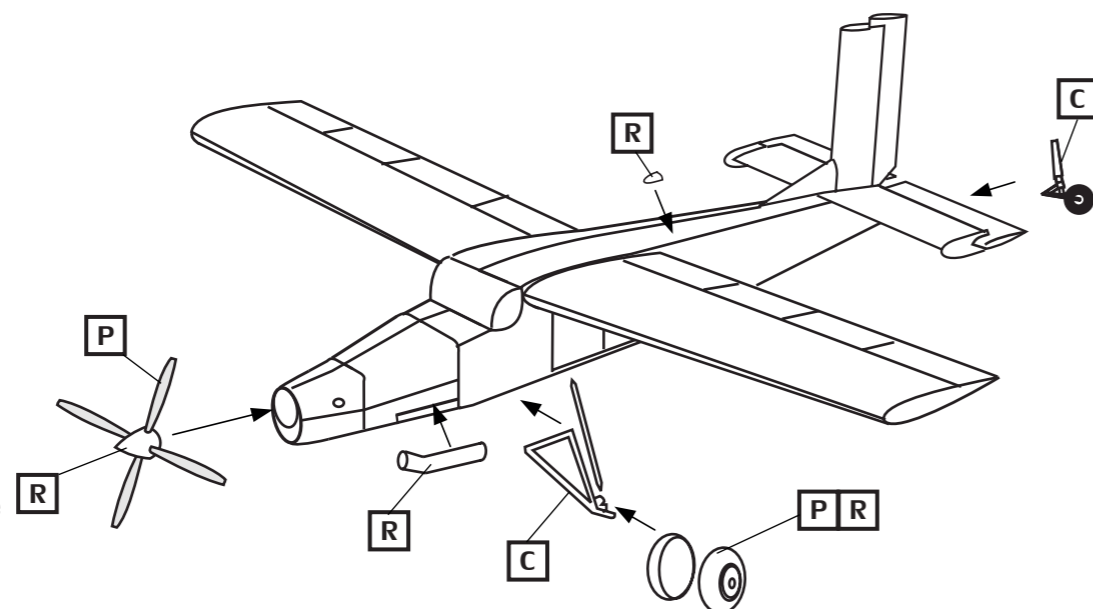
Construction Notes

Fit the horizontal tail surfaces and tail plane.

The small resin tail plane end plates fit at the tips of the tail plane.

The tail planes are operated by actuating rods on the centre edge. These can be added from rod or stretched sprue.

7



Construction Notes

Fit the final details including tail wheel, main undercarriage legs and shock struts (thinner section to top), resin exhaust, ventral intake, main wheels and the spinner and propeller blades.

Note: Propellor blades should be in a feathered position when the engine is not running.

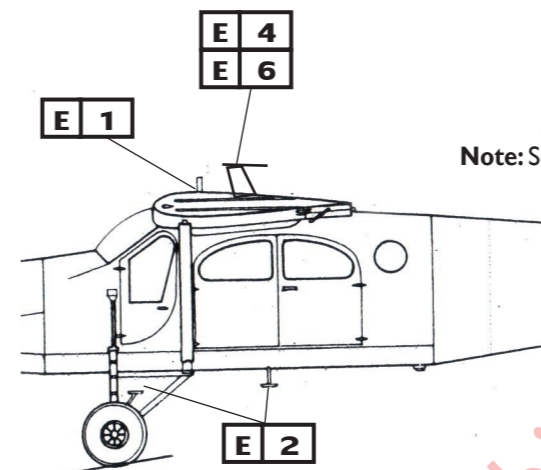
CONSTRUCTION

Construction may require parts to be scratch built or sourced from a spares box. These are marked **S** and notes are given.

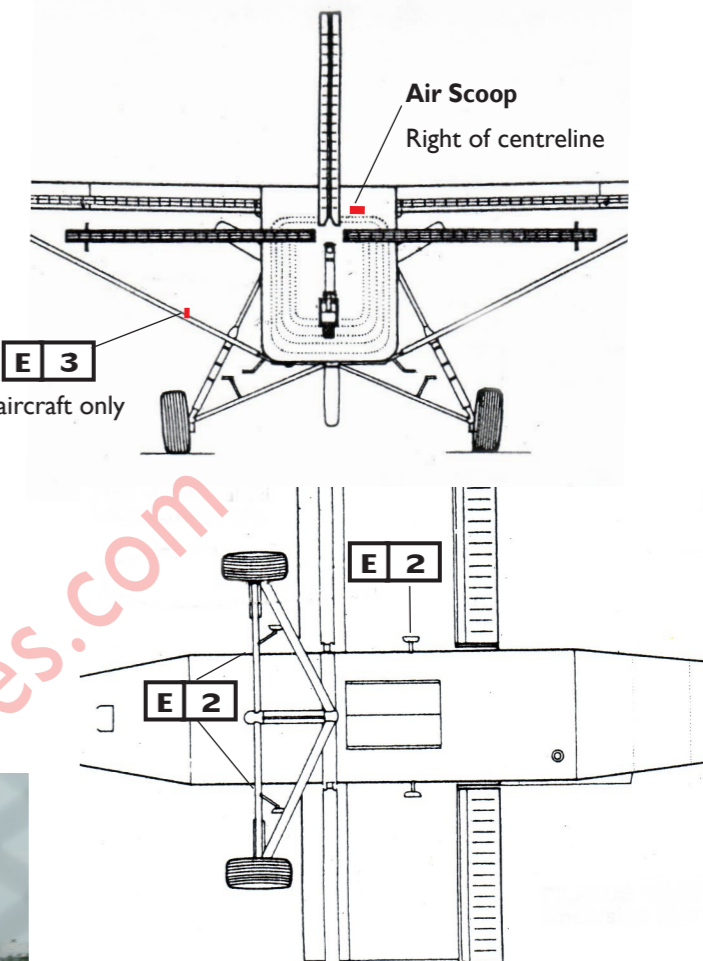
8

Construction Notes

The antennae fit varied widely and consulting photographs of the specific aircraft is recommended.



Note: Some aircraft only



Images: A. Rigby

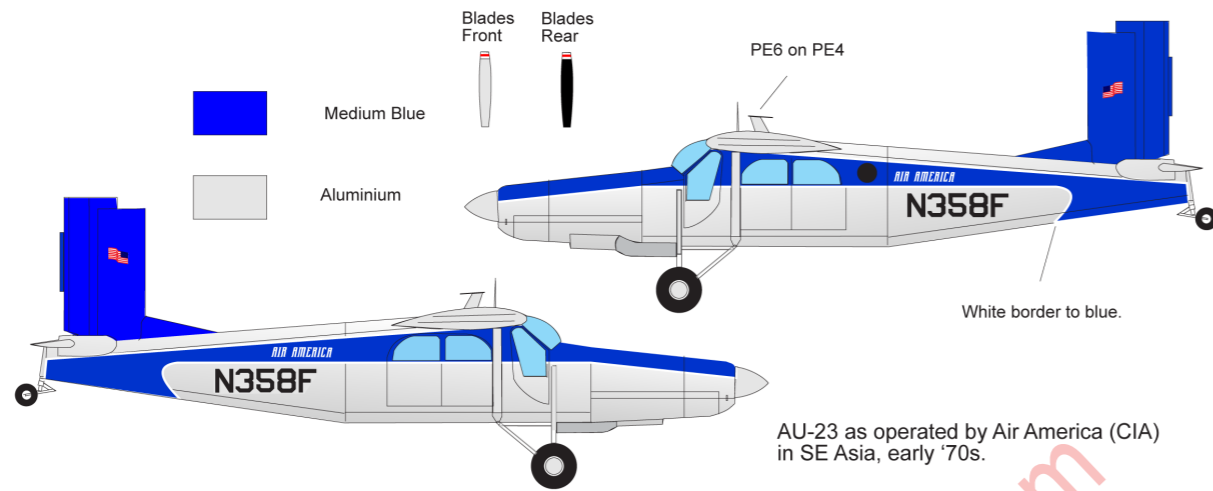


Acknowledgements We thank Anthony Rigby for assistance in preparing this kit and providing images.

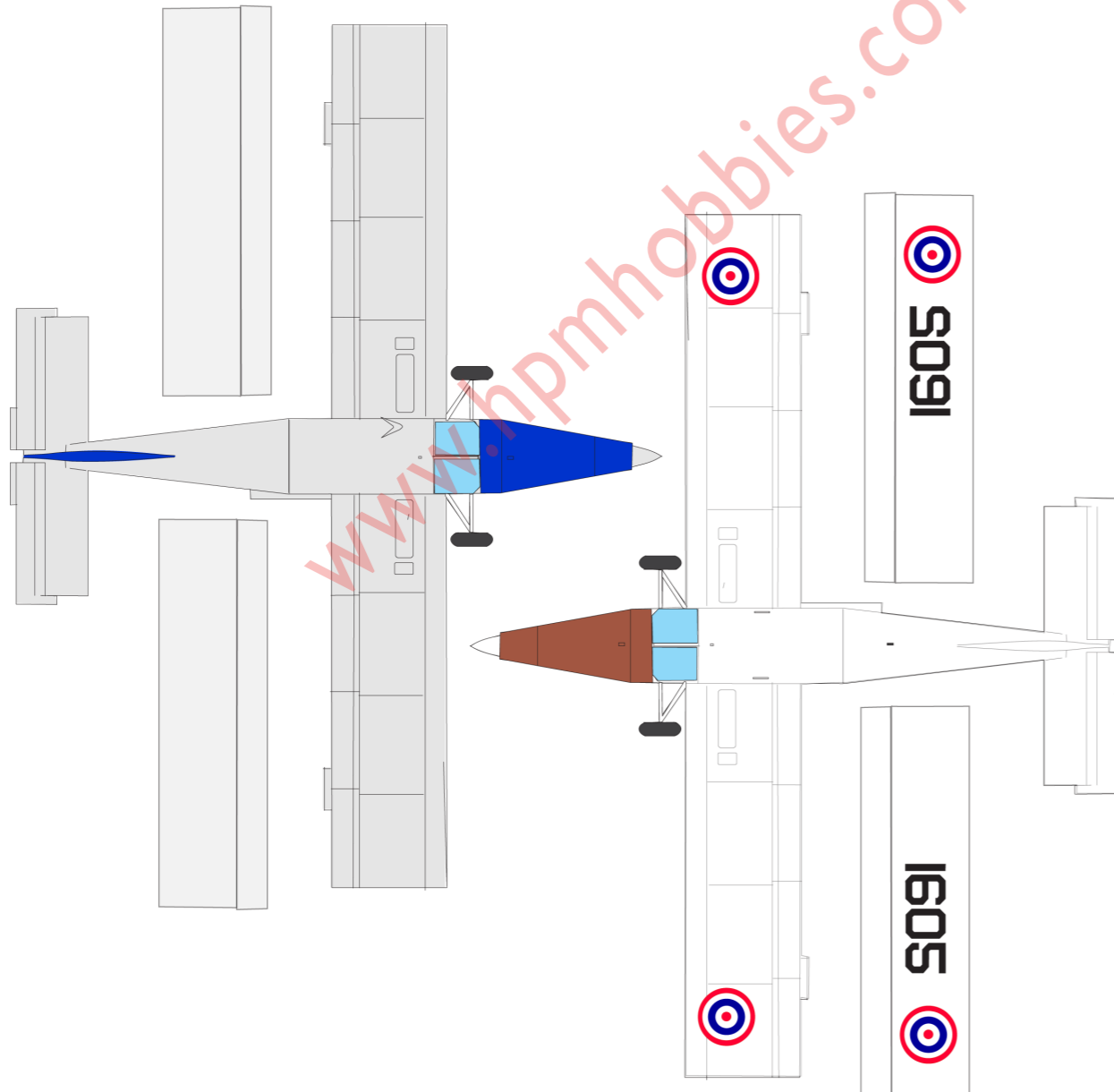


FAIRCHILD AU-23A PEACEMAKER

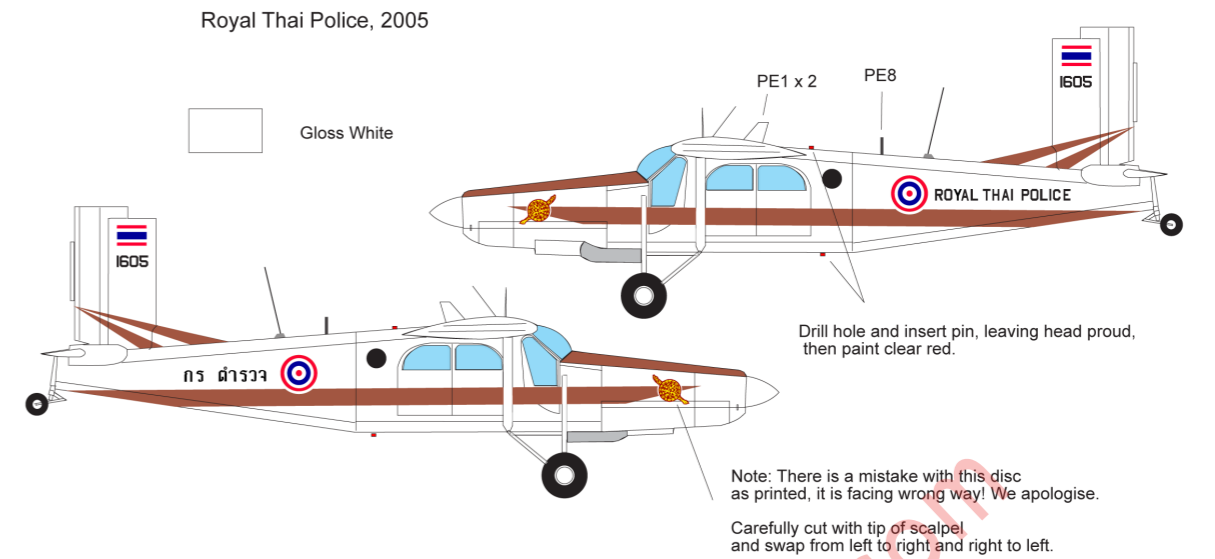
K 072087
1/72 Scale Model Construction Kit



AU-23 as operated by Air America (CIA) in SE Asia, early '70s.



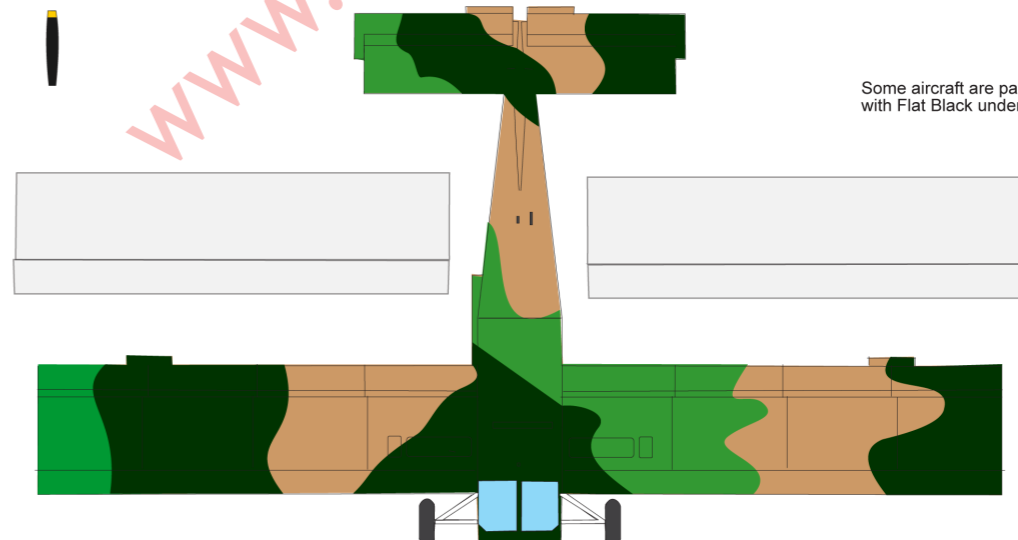
FINISHING & MARKINGS



AU-23, 531 Sqn, Royal Thai Air Force, 2005.



Some aircraft are painted with Flat Black undersides



- FS34102
- FS30219
- FS34079
- FS36622